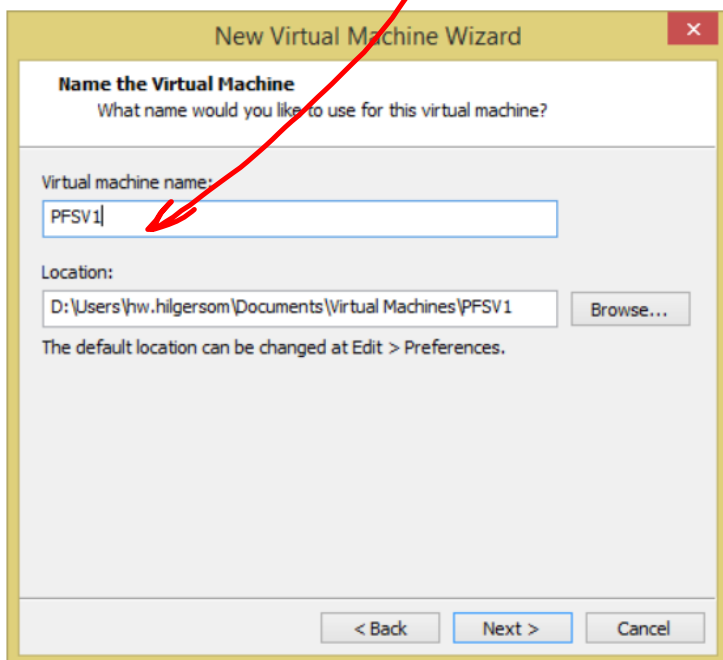
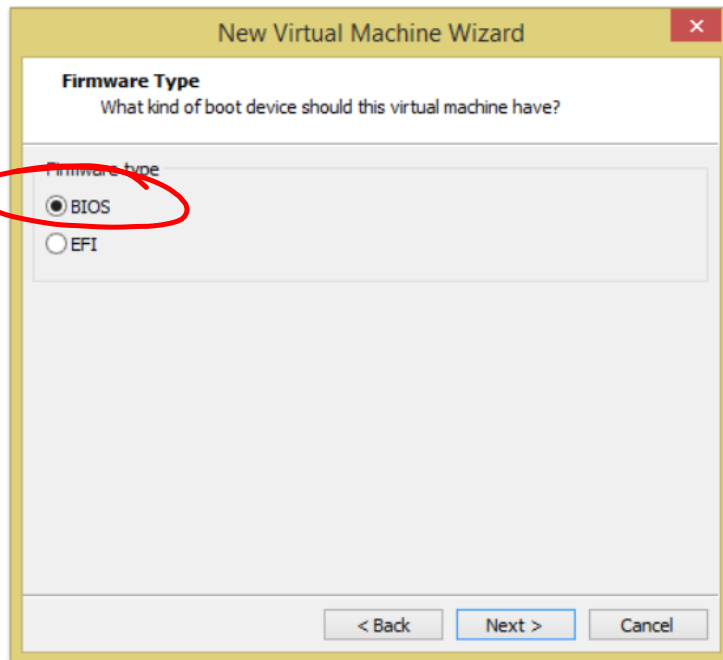
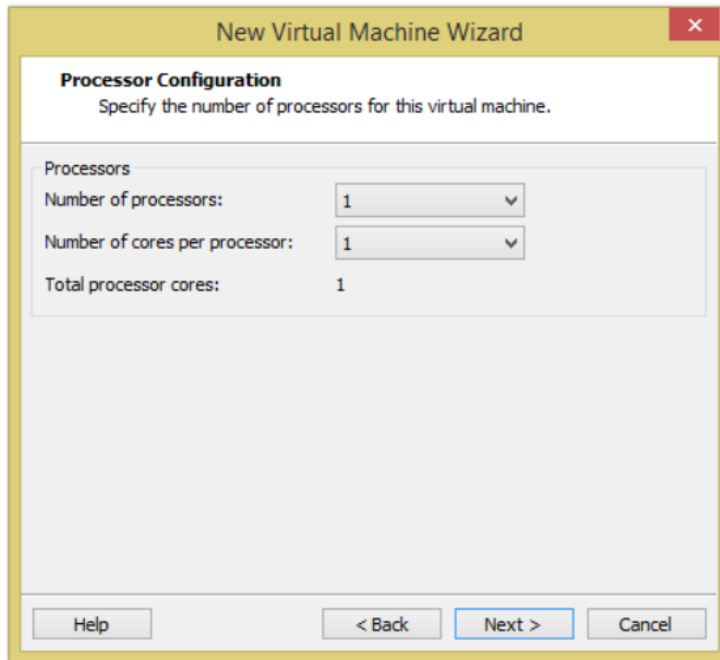


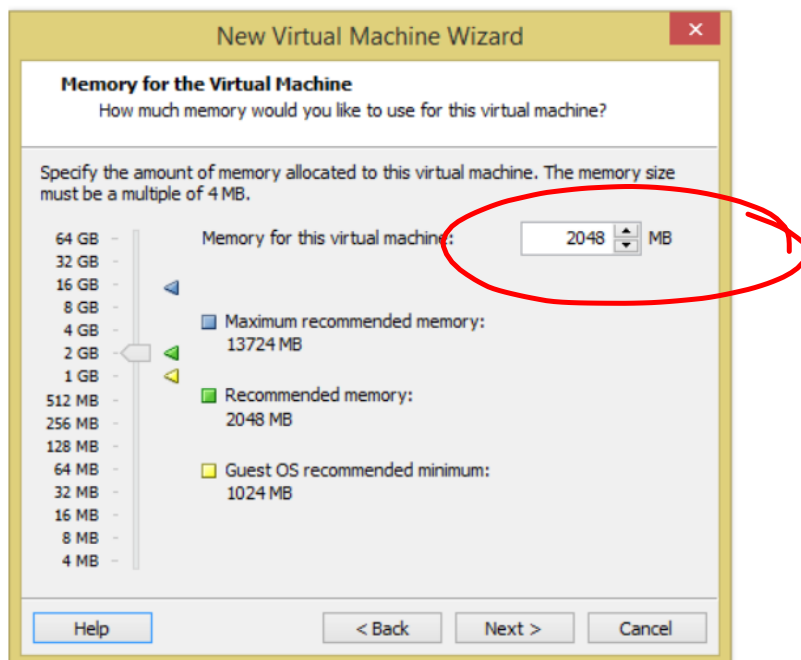
HZSV 1

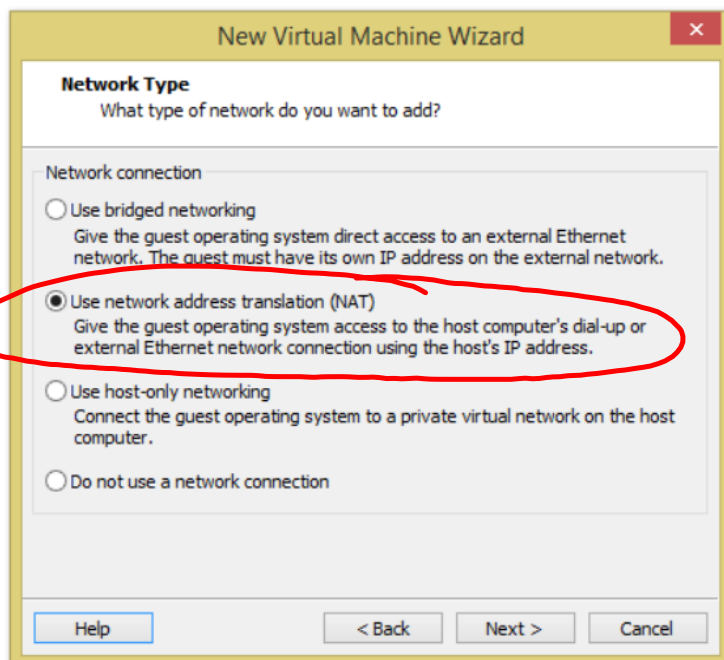


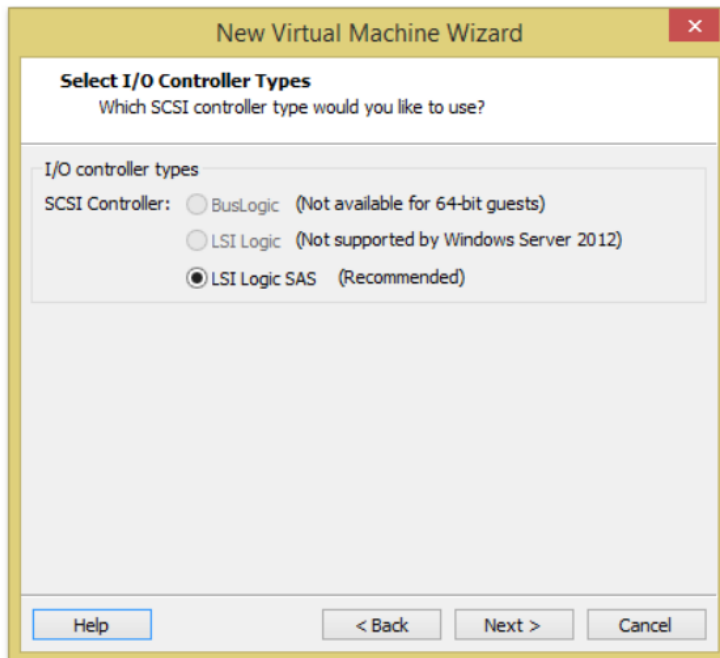


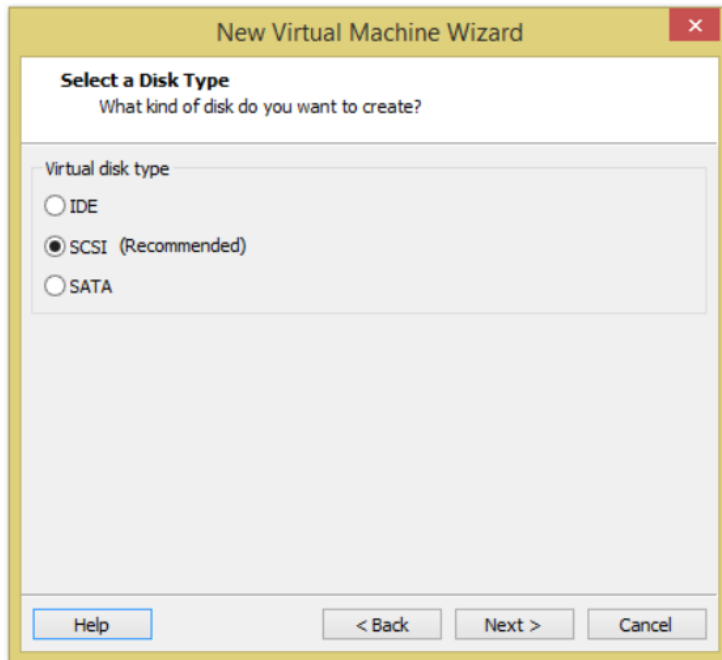


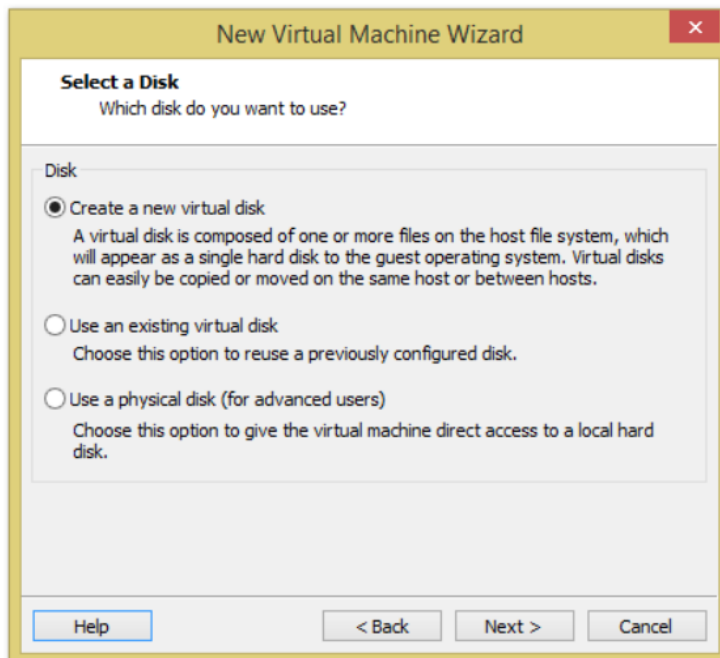


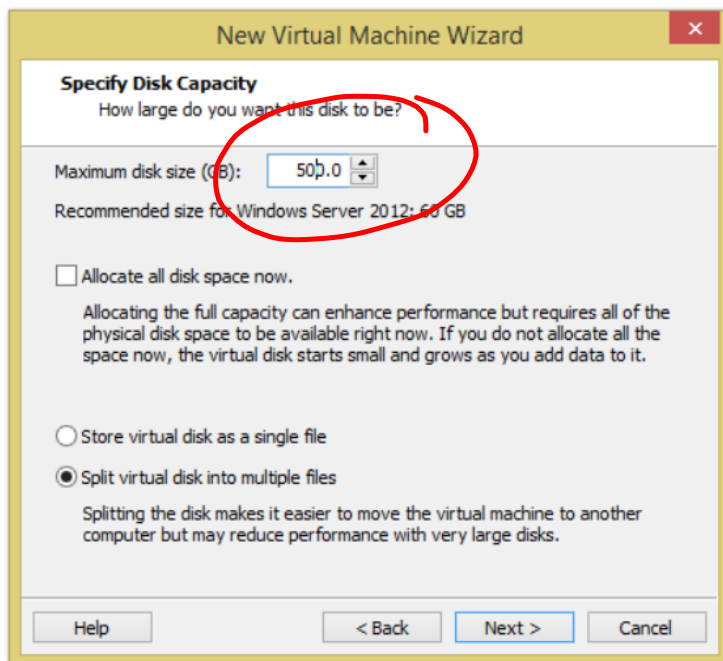




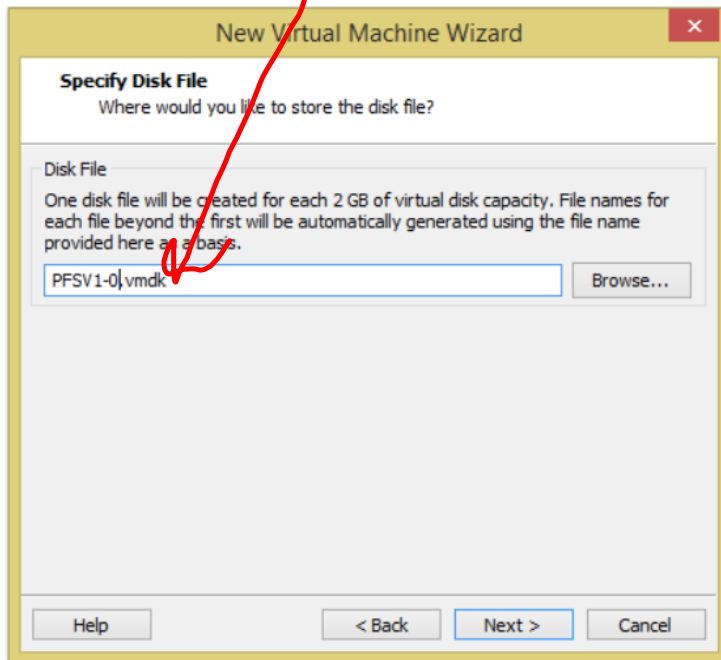




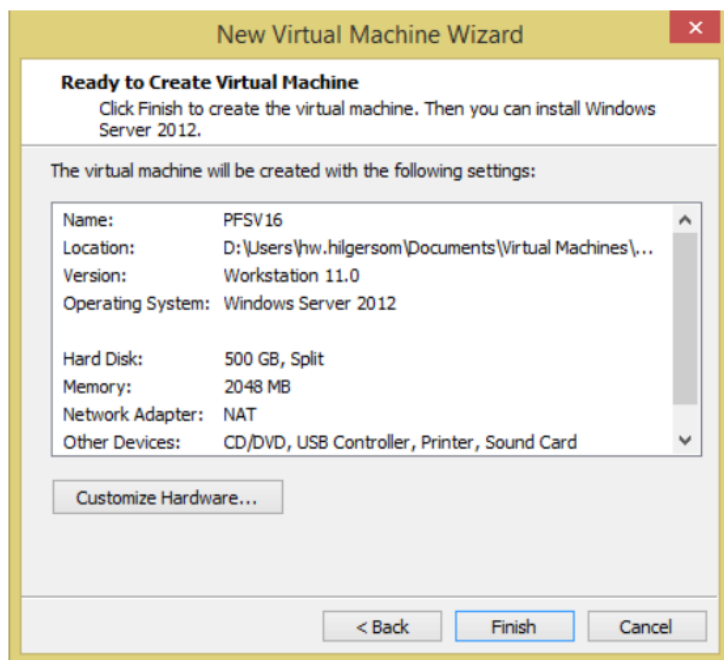




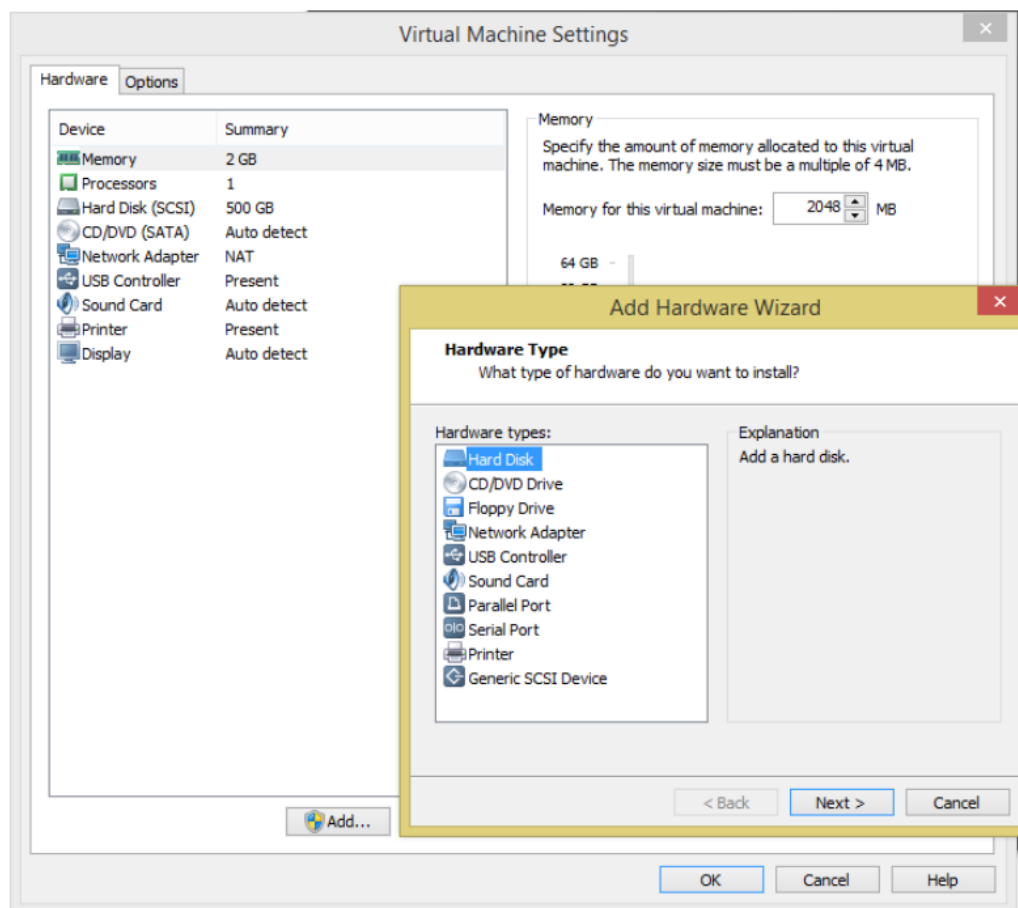
HZSV1-0.vmdk

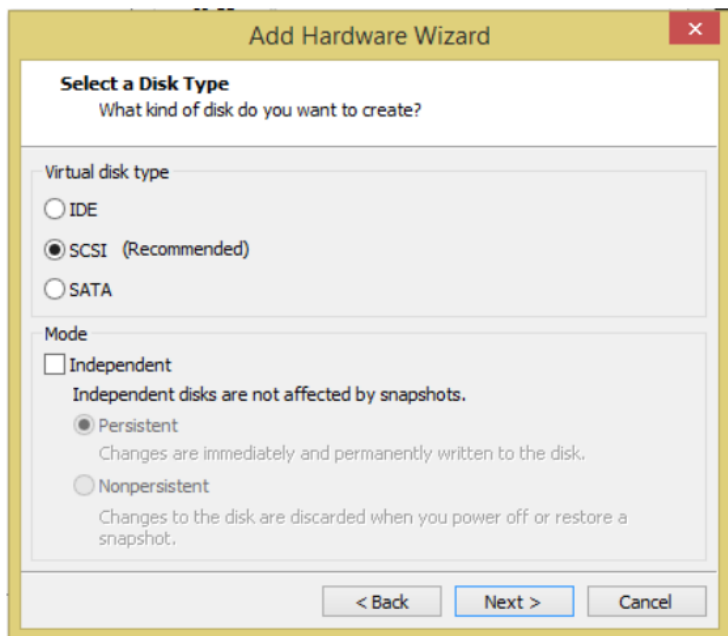


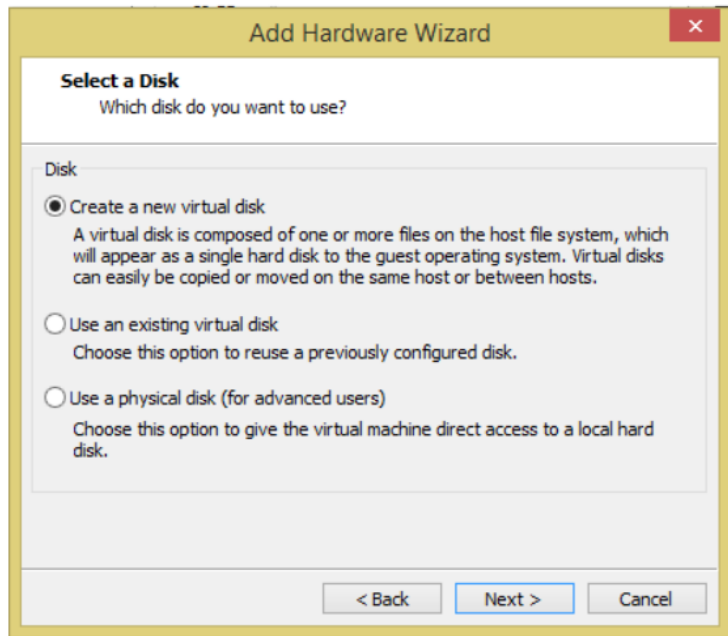


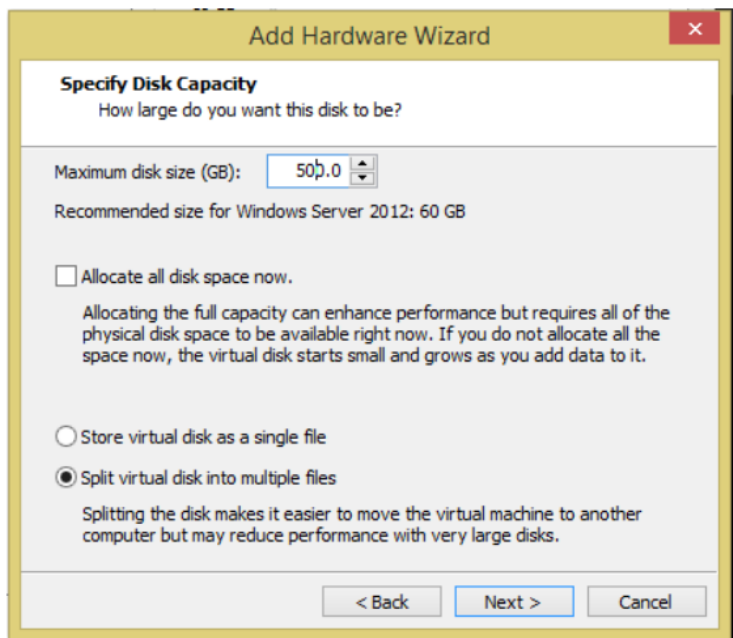


## Tweede harde schijf toevoegen

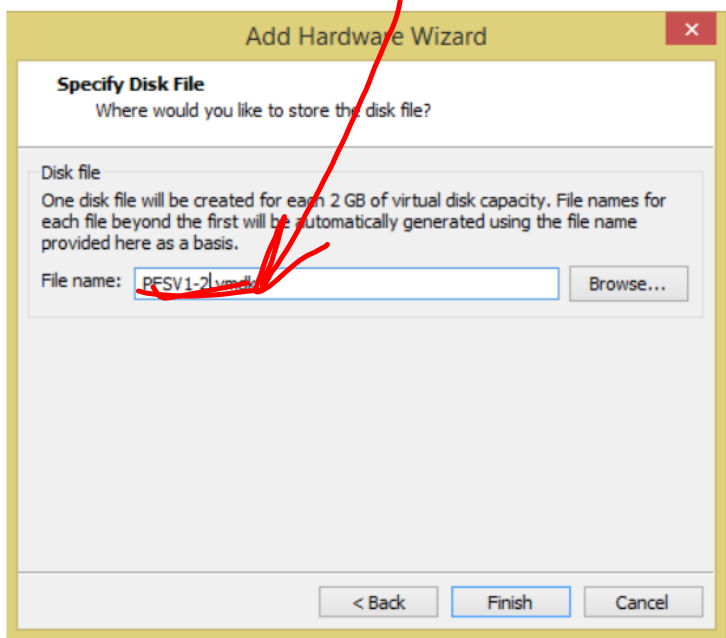




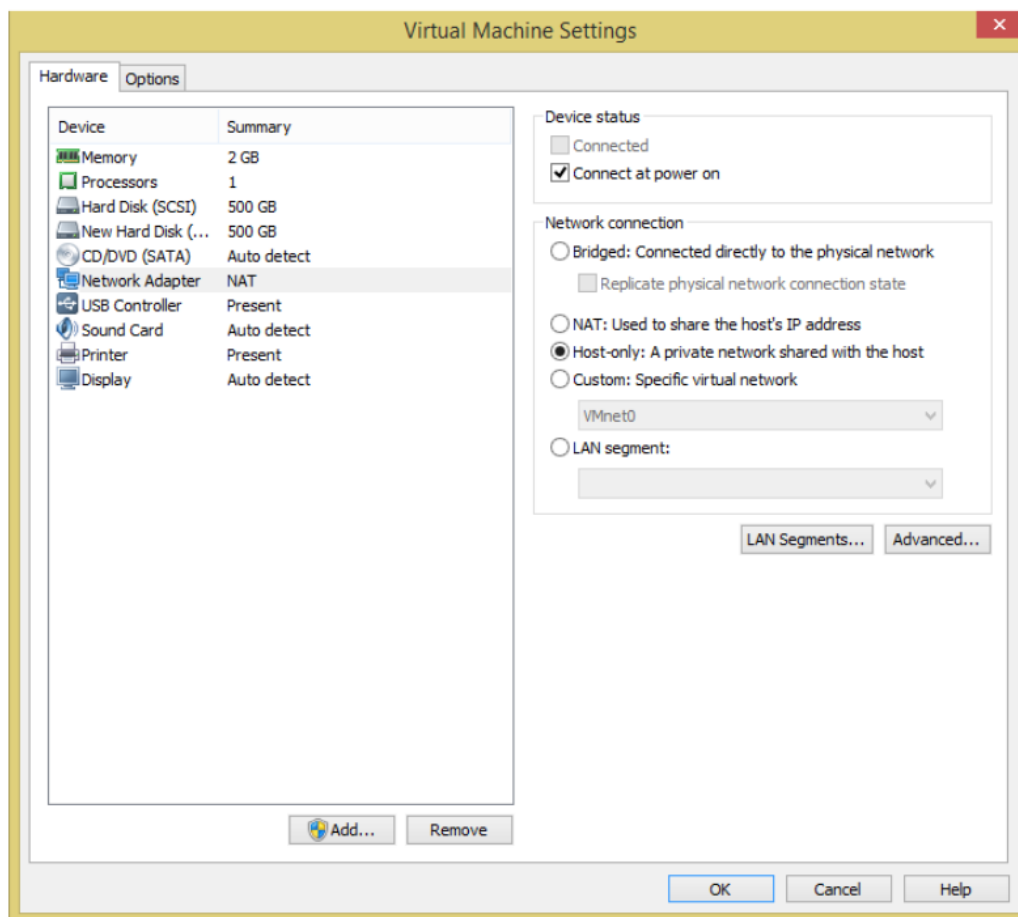




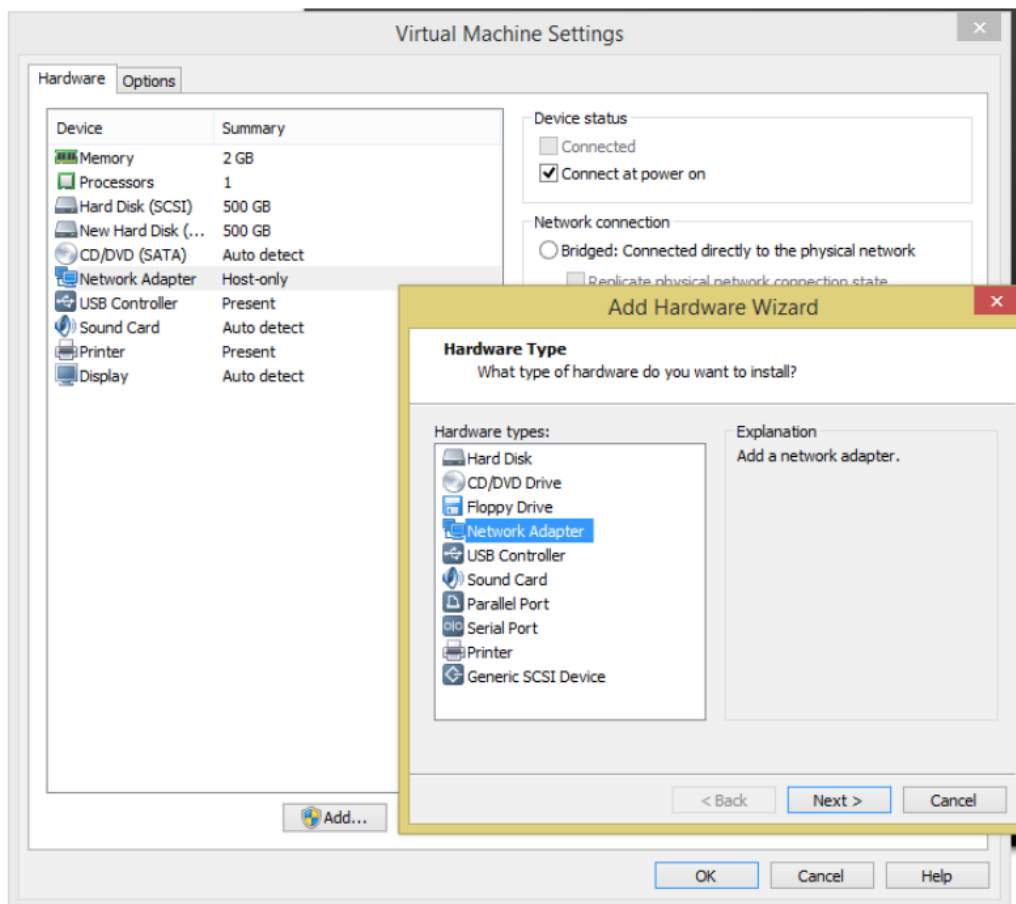
HZSV-1.vmdk



## Eerste netwerkkaart op Host-only zetten

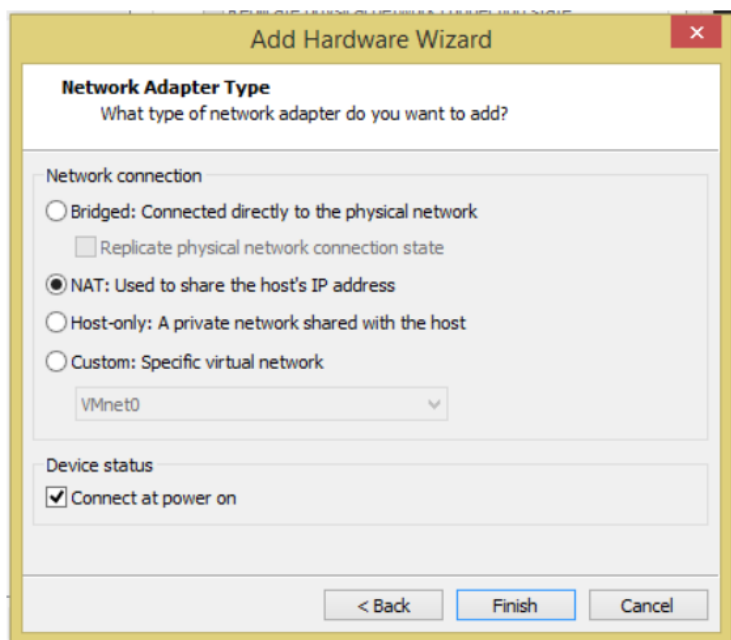


## Tweede netwerkkaart toevoegen

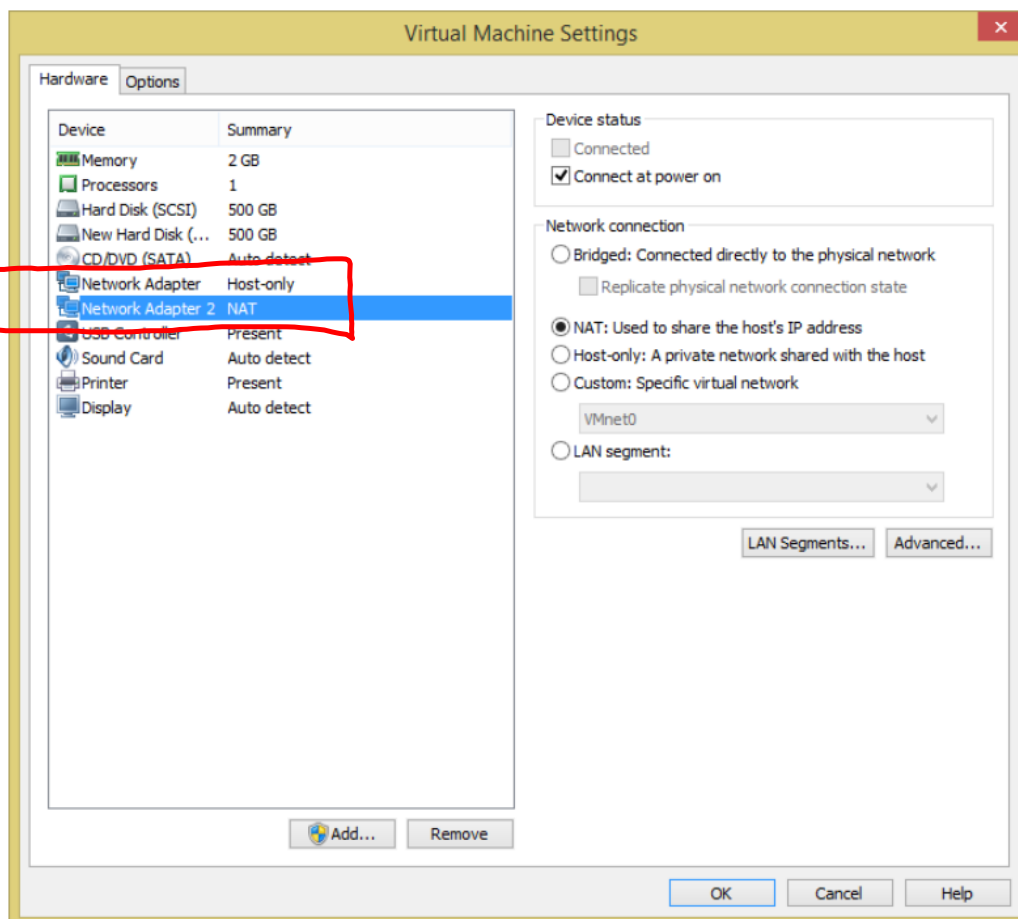


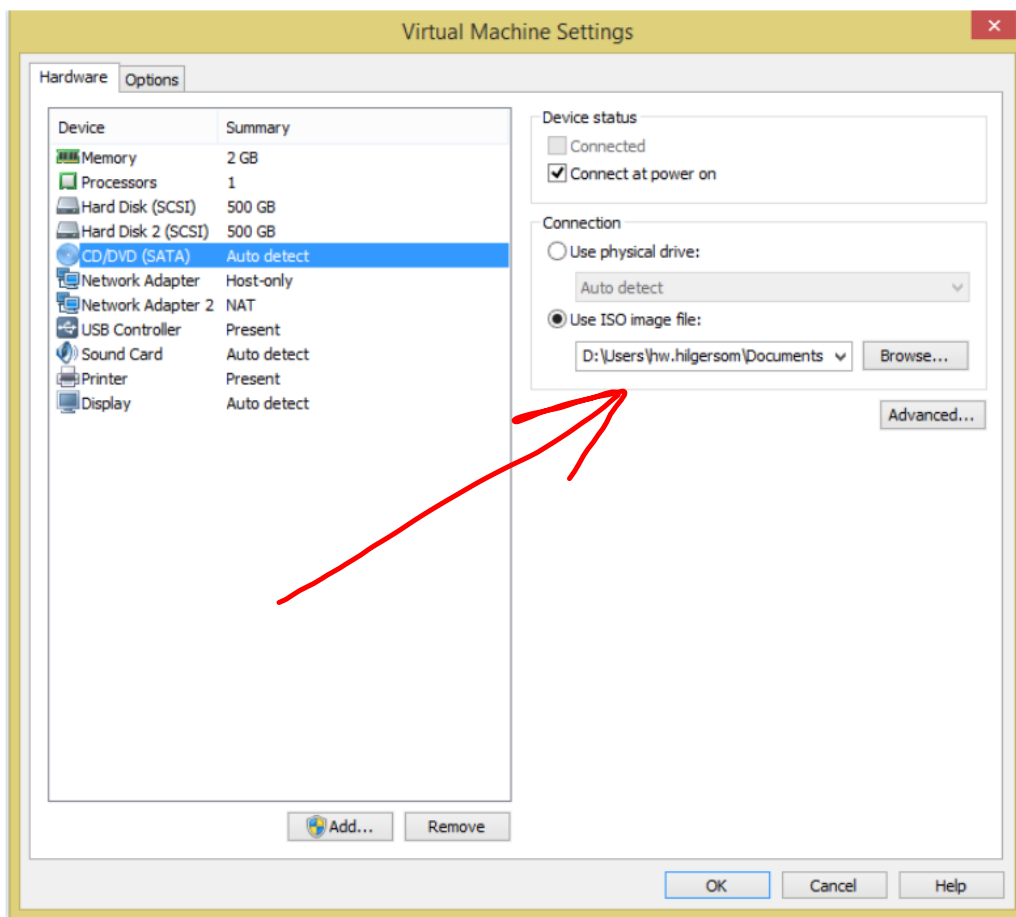


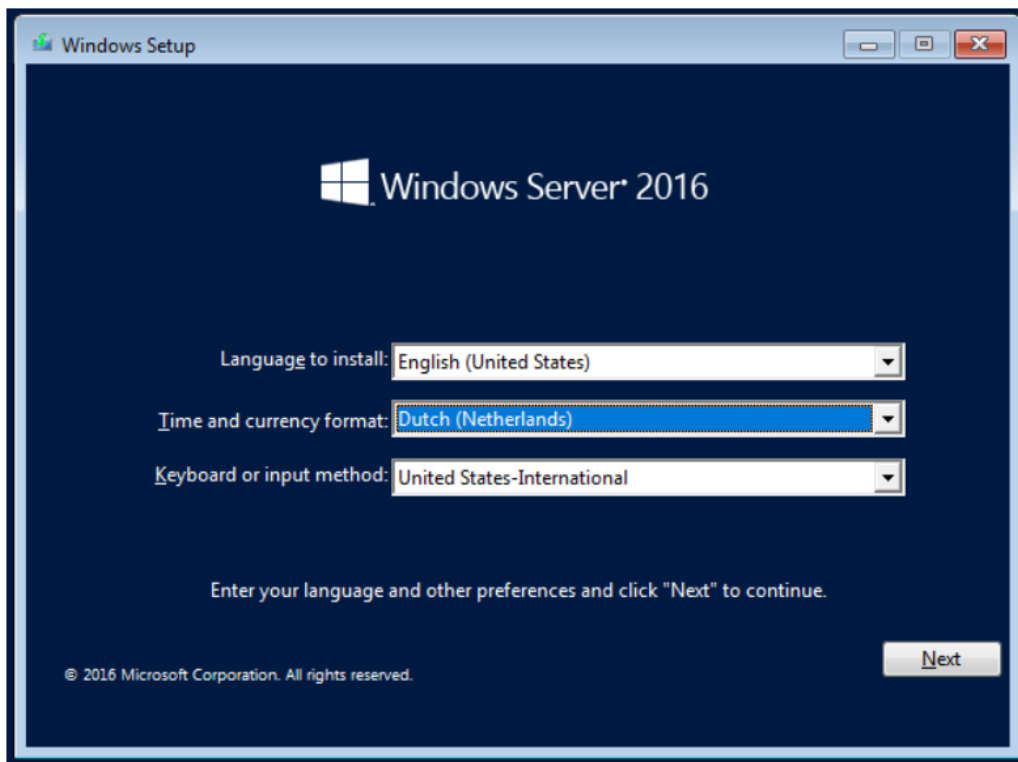
## Tweede netwerkaart op NAT zetten



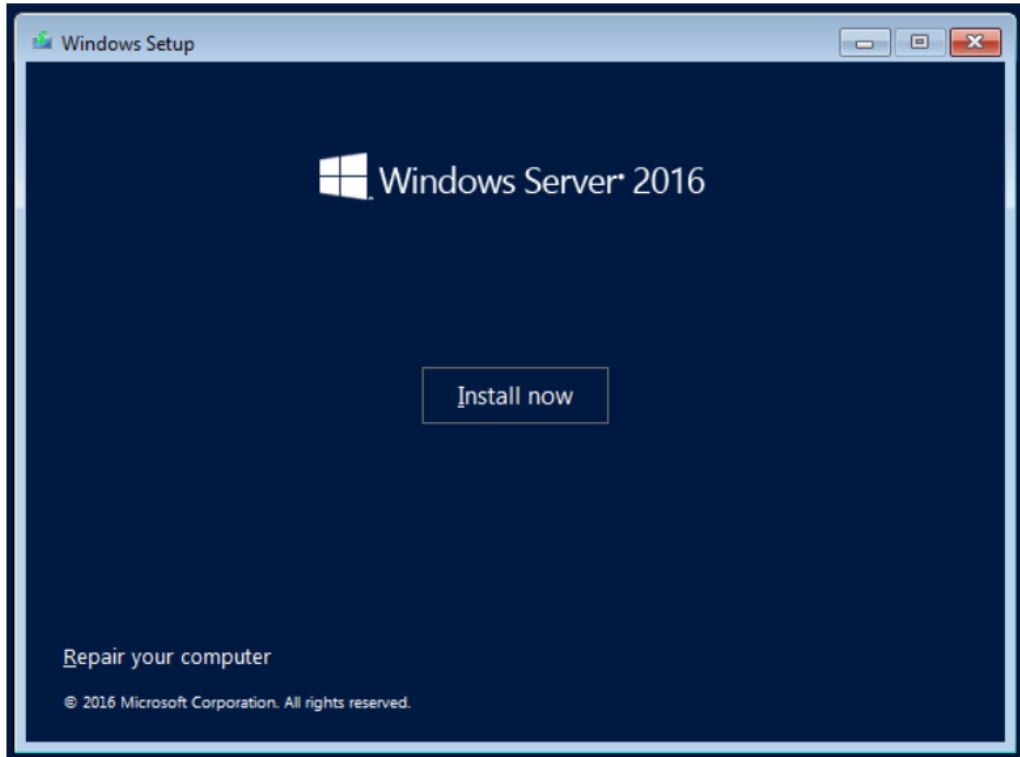
## 2 Netwerkkarten

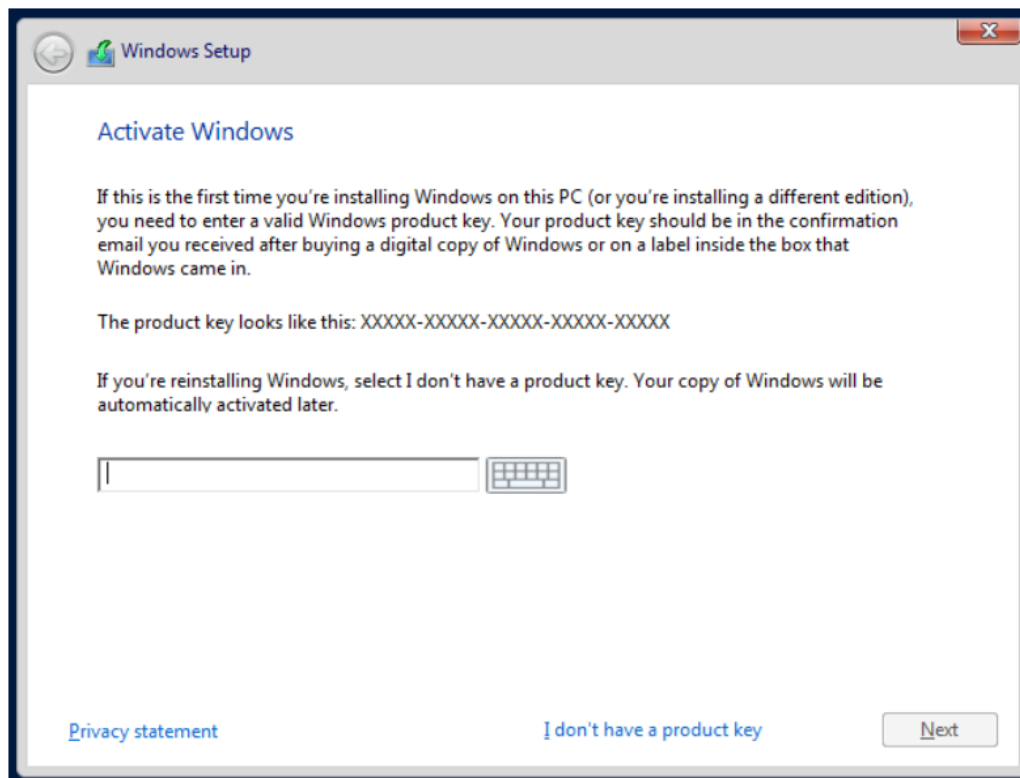




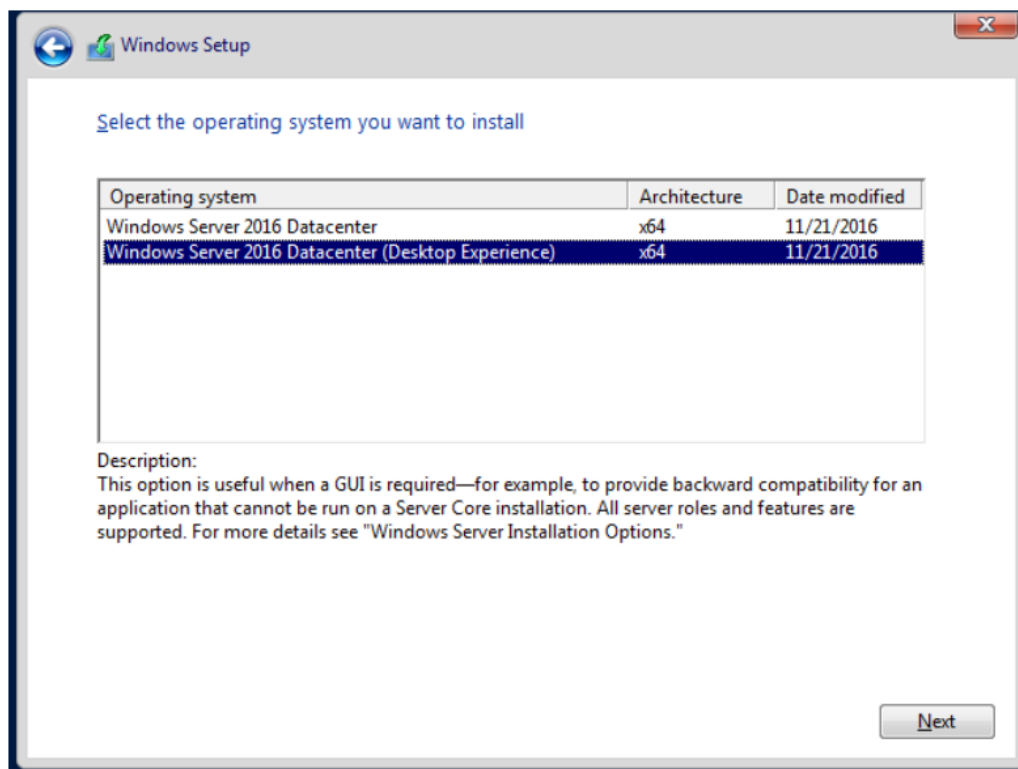


ENG  
NED  
US

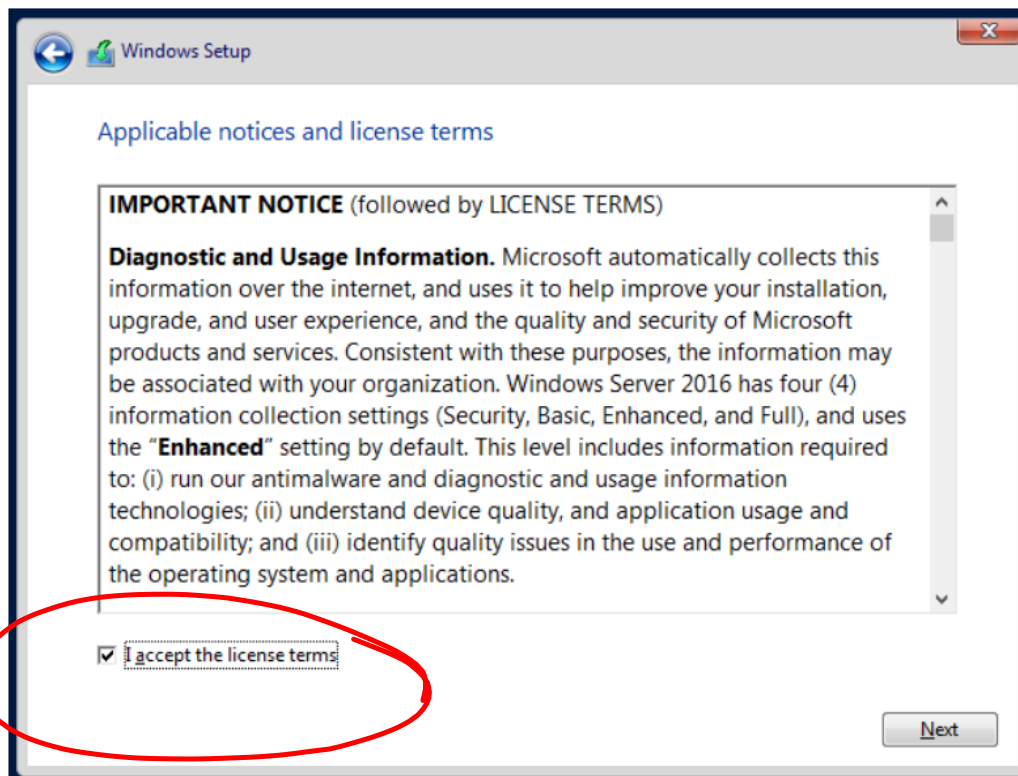




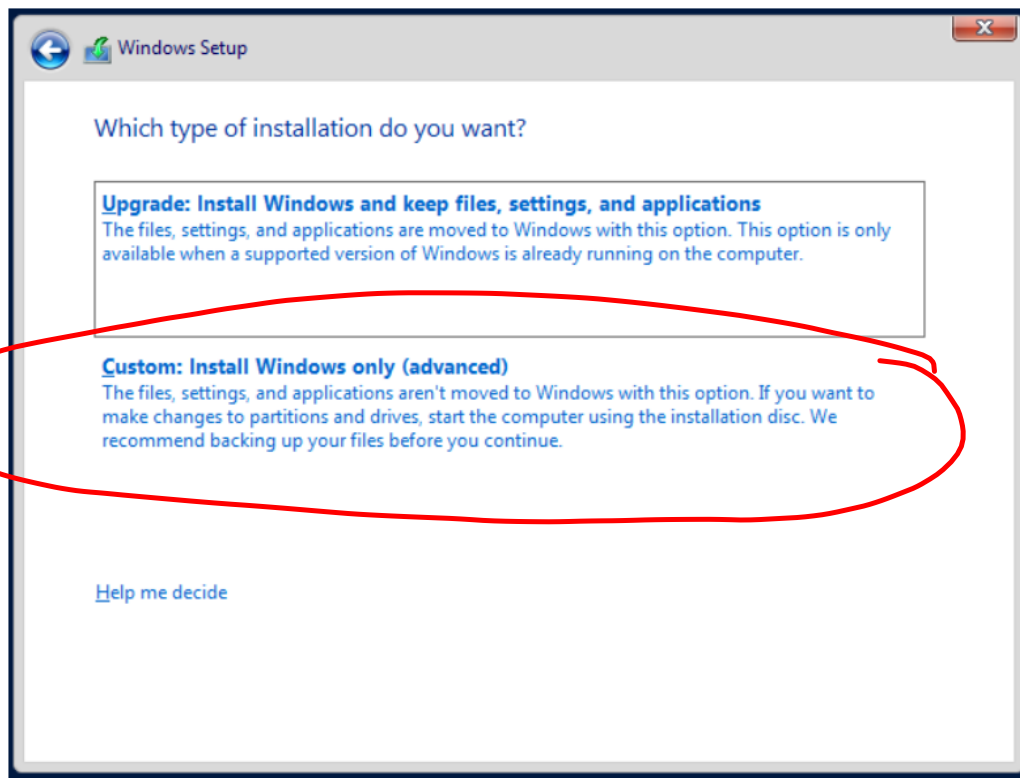
Kies dit!



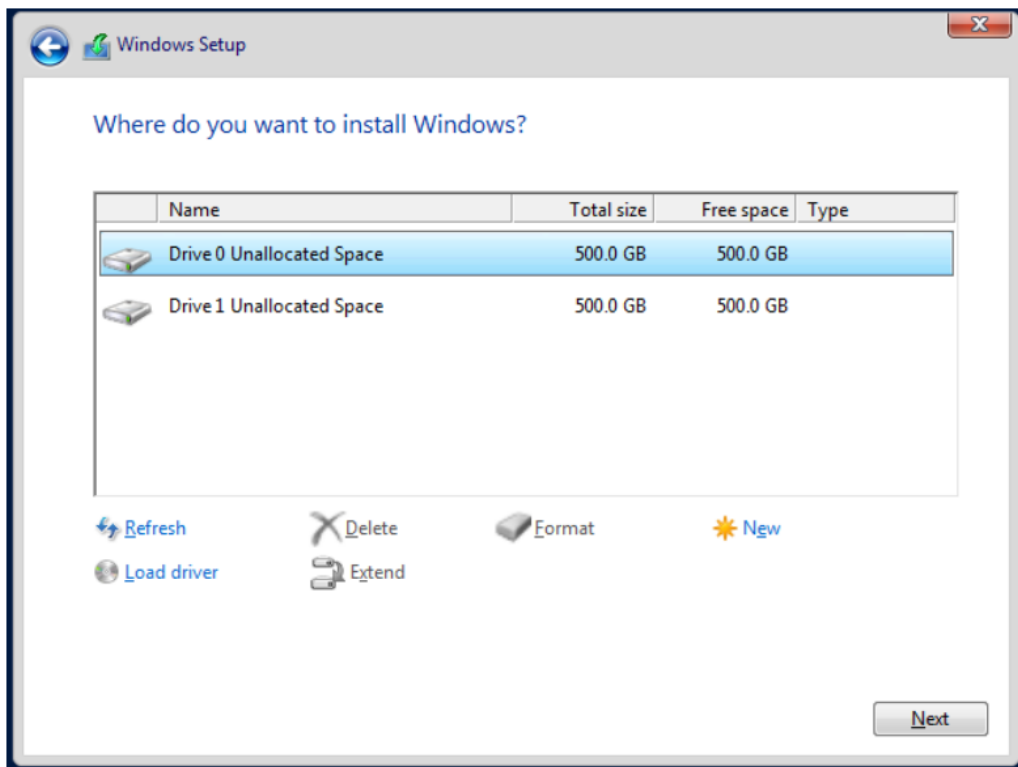
GUI / Deskt. Exper.

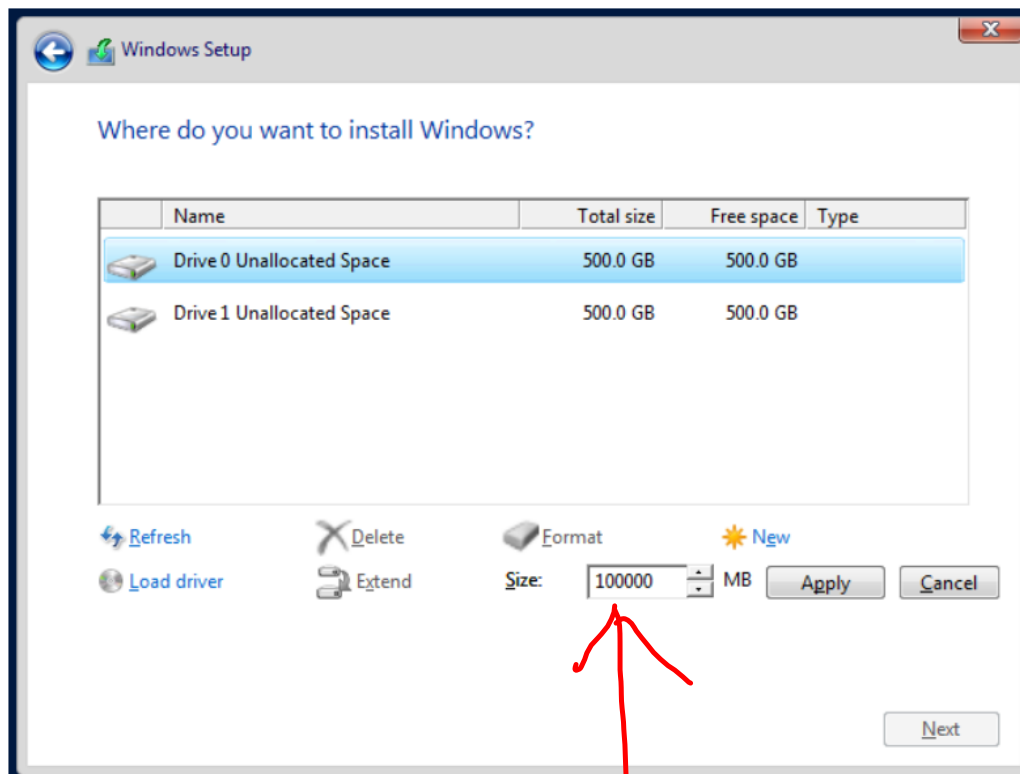




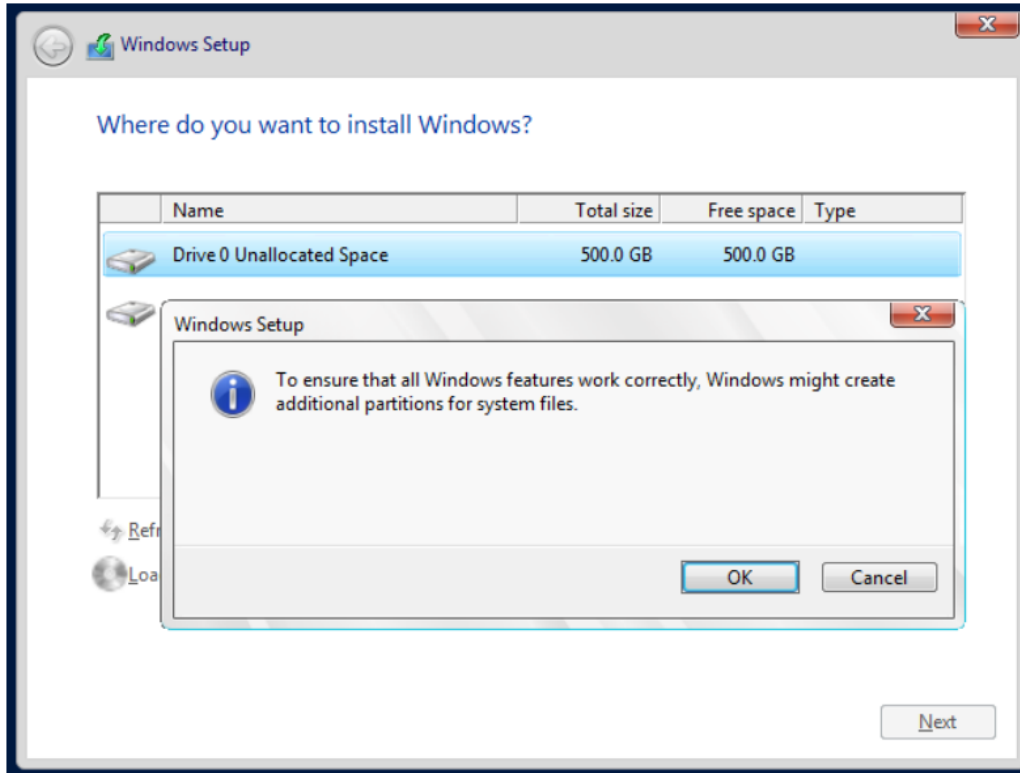


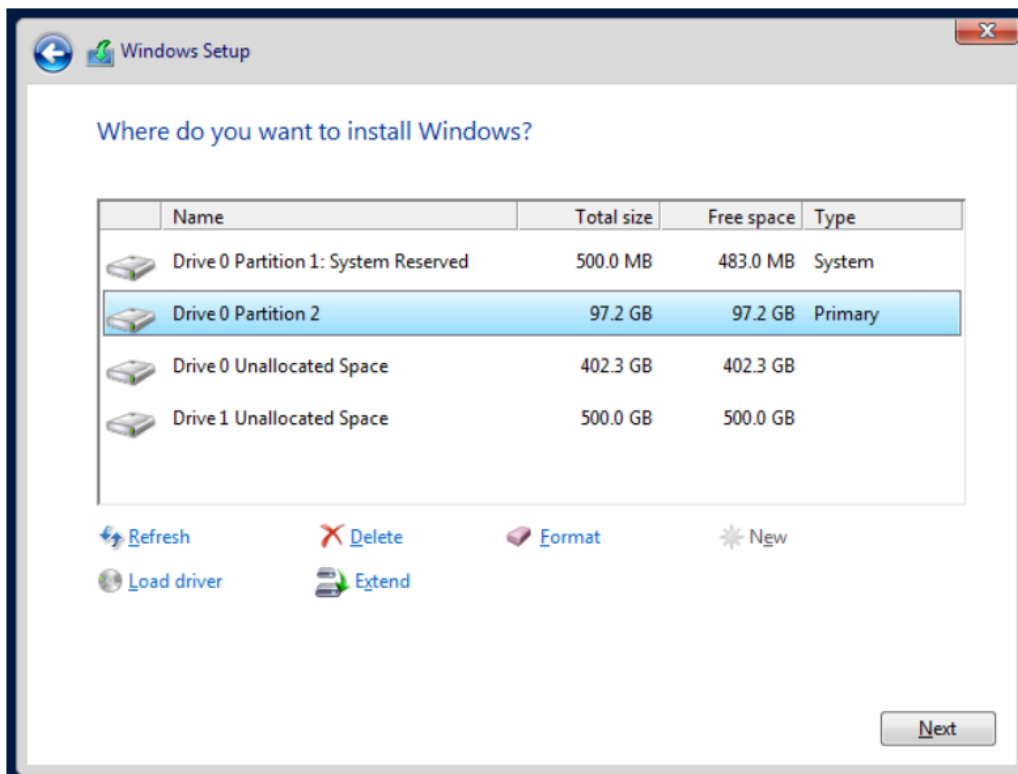
Custom

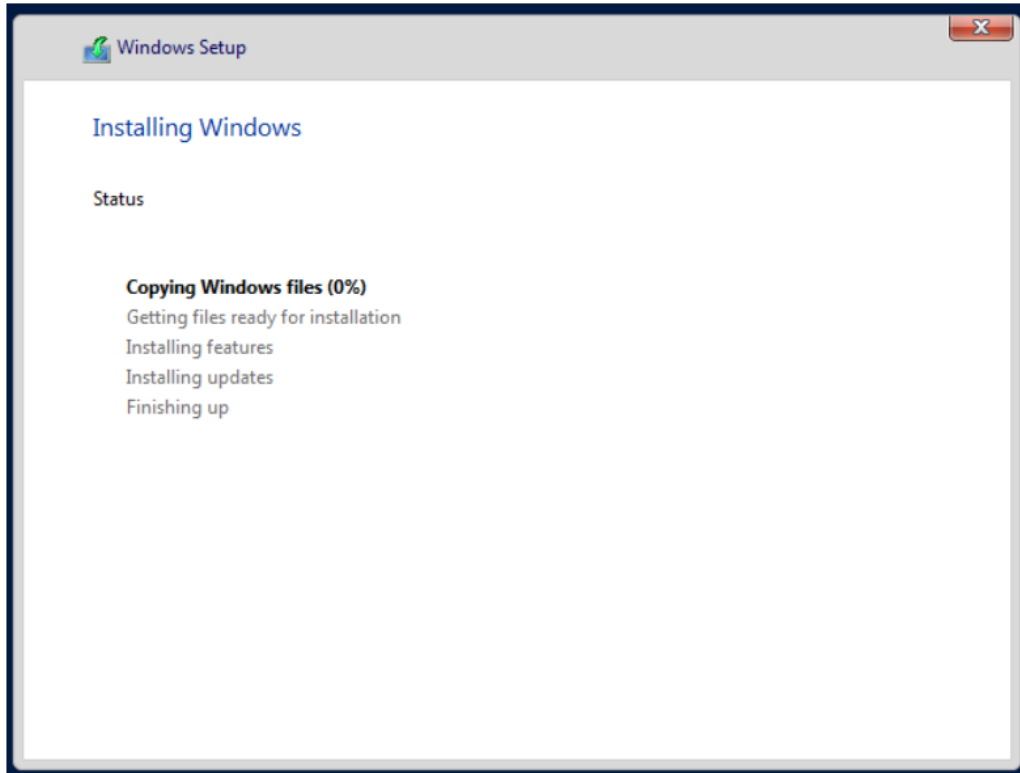




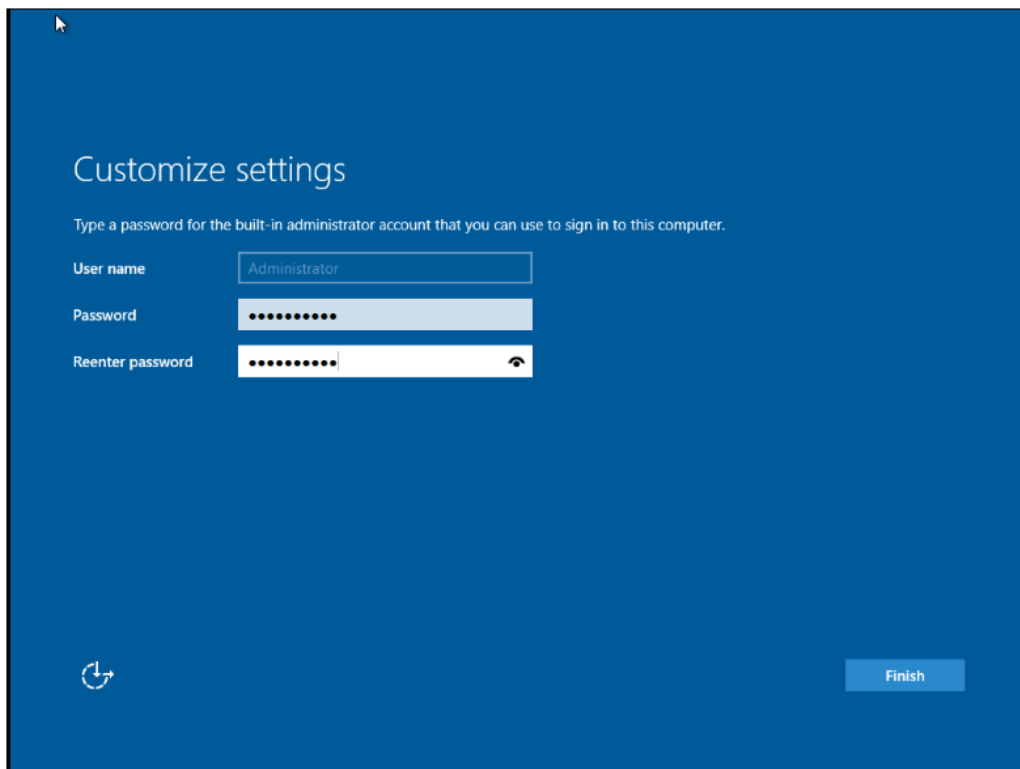
100 GB







# Administrator



Welkom 123





